



Flozer DeskCenter

We offer connectivity to your network at a low cost using different communication protocols (X, RDP, VNC, RFB), in a similar way than solutions like Citrix, benefiting of the use of more network compression and with FLOSS solutions which will allow for costs cutting and to have technical solutions which provide an optimum performance.

The problem

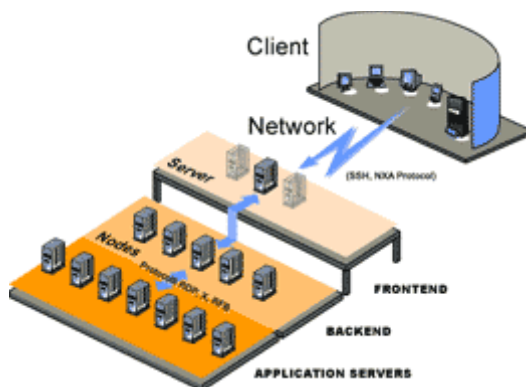
Both small and big companies want centralized and safe access to user applications. Normally, having in every workstation an operating system and a powerful computer means high costs and maintenance, handling and control problems.

The solution

Flozer DeskCenter is a way to centralize in a single equipment piece the administration, control and maintenance of all workstations. Additionally, it offers connectivity to your network at a low cost using different protocols of communication (X, RDP, VNC, RFB), in a similar way to solutions like Citrix, benefiting of a higher network compression by the use of FLOSS components that will allow to cut costs and have solutions that allow for an optimal performance.

Highlights

- + Centralized administration of workstations and corporate applications
- + Centralized administration of the application server
- + Low hardware and software costs
- + Quick return of the investment
- + High scalability and performance



Central Desktop Management Center

“Control, maintain and handle all your farm of workstations from a single point.”

This solution have two flavors

Flozer DeskCenter Appliance
Integrated Hardware & Software

Flozer DeskCenter Stand-alone
Installed Software on generic hardware

Ask us about this flavors.

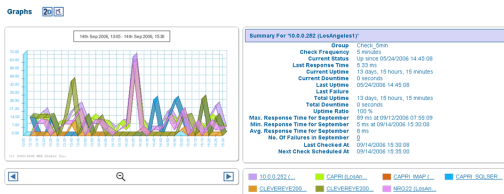


Flavors

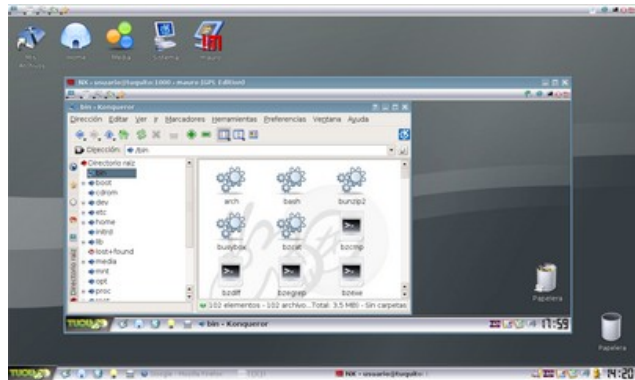
- **Boot appliance.** Boot the thin clients proving complete support to the hardware and proving remote access (RDP, VNC, ICA, X, NX).
- **Desktop server.** Linux server with desktop applications for desktop access in a remote way providing all the characteristics of our application server.
- **Gateway server.** Network protocols are compressed to guarantee a low bandwidth usage (VNC, RDP or X protocols)
- **OnlyOne appliance.** Combines all the characteristics of the preceding appliances handling the booting of thin clients, remote server and gateway server.

Main features

- Centralized administration of workstations
- Application publishing
- Web-based client access
- Administration of user profiles
- Administration of passwords
- Administration of the server
- Linux and Windows Terminal Server support
- High compression and cache
- Presentation server
- Application server access gateway
- Administration of thin and fat clients
- Cache/compression server administration
- Remote boot (PXE/BOOTP) server for thin clients and fat clients
- Wide support of hardware (printer, USB, sound, scanner, etc)



© 2005-2006 NFO Global. All Rights Reserved.



Contact us to receive advising.

sales@flozer.com

Flozer is a business unit of Neurowork™



Know our soluciones

www.Flozer.com/solutions

Know our services

www.Flozer.com/services

Contact us

sales@flozer.com

For more information about us and our solutions, please contact us.

Web www.flozer.com

E-mail contact@flozer.com

P. Buenos Aires **+54 11 4826 2960**

P. Madrid **+34 617 16 56 83**

P. Sete Lagoas **+55 31 8822 2496**

Neurowork in the world

America Regional Office

Guise 1944 1° B

CF3993JK Buenos Aires

Argentina

P/F: +54 11 4826-2960 / +54 3722 46-2885

bsas@neurowork.net

Europe Regional Office

Andrés de Urdaneta, 6, D, 4° C

28045 Madrid

Spain

P: +34 617 16 56 83

madrid@neurowork.net

Brazil Regional Office

Praça Dom Carmelo Mota, 35

35700-074 Sete Lagoas

Brzsil

P: +55 31 8822 2496

setelagoas@neurowork.net



About Neurowork. Neurowork is a international company focused in last technologies. Through of several business units, Neurowork tries to facilitate integral and vertical access to technologies for companies of all sizes. Neurowork have locations in several points of the world for a more personalized customer support.

© 2007 Neurowork. All Rights Reserved.